



All Aboard! *lite*

2021-22 Typhoon Odette relief drive
- a Döhle Seafront journal

the grinch that stole Christmas

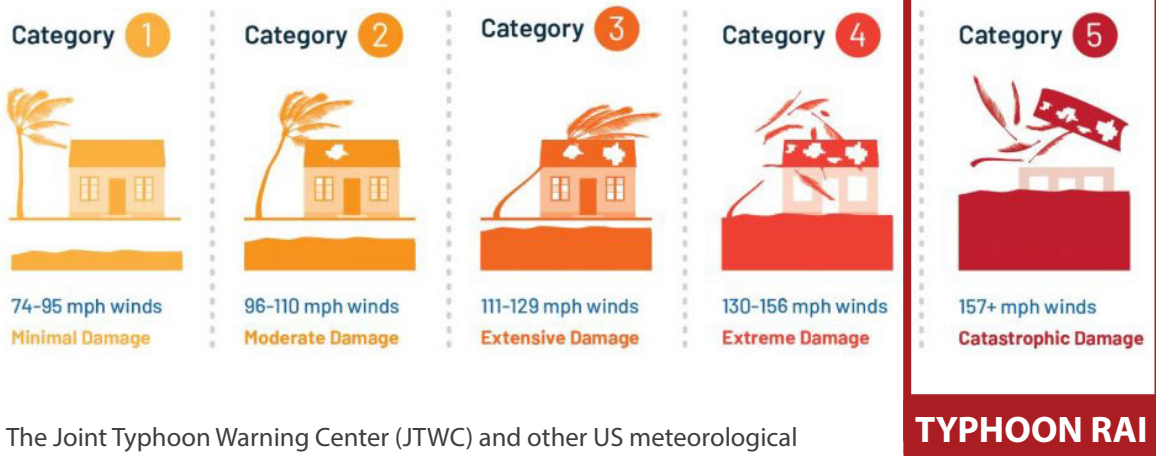
As Filipinos strived to celebrate the happiest day in the world amid the "new normal", super typhoon Rai (Odette) ravaged the Philippines, rubbled thousands of homes, and stole our kababayans' smiles and joy for Christmas. Döhle Seafront and good samaritans took action.

Overview: the grinch that stole Christmas

Typhoon Rai, locally named Typhoon Odette, was a powerful and catastrophic tropical cyclone that struck the Philippines. It is the 22nd tropical storm, the ninth typhoon, and the fifth super typhoon of the 2021 Pacific typhoon season; developed from a tropical disturbance near the equator on December 10, forming near the site of another low-pressure area that had dissipated on the previous day. It slowly developed into a tropical depression on December 12. It was upgraded to a tropical storm the following day and entered the Philippine Area of Responsibility (PAR) by the night of December 14, where the Philippine Atmospheric, Geophysical, and Astronomical Services Administration (PAGASA) named it "Odette". Both the Japan Meteorological Agency (JMA) and the United States Joint Typhoon Warning Center (JTWC) raised the system's intensity to a low-end Category 1-equivalent typhoon, as an eye continued to appear. While approaching the Philippines, Rai unexpectedly rapidly intensified into a Category 5 super typhoon just before its first landfall across Siargao. It then slowly but steadily weakened as it traversed the Visayas, exiting into the Sulu Sea. After making its last landfall over Palawan, Rai continued to weaken before unexpectedly re-intensifying into a Category 5-equivalent typhoon by December 18, while nearing Vietnam. On the following day, Rai weakened and eventually dissipated on December 22, southeast of Hong Kong.

In this AllAboard! Lite release, we pay homage to all of the individuals and industry partners that supported our relief drive *Lifeline* and helped the victims of super typhoon Rai (Odette) weeks before the most joyous celebration of Christmas and New Year in the Philippines.

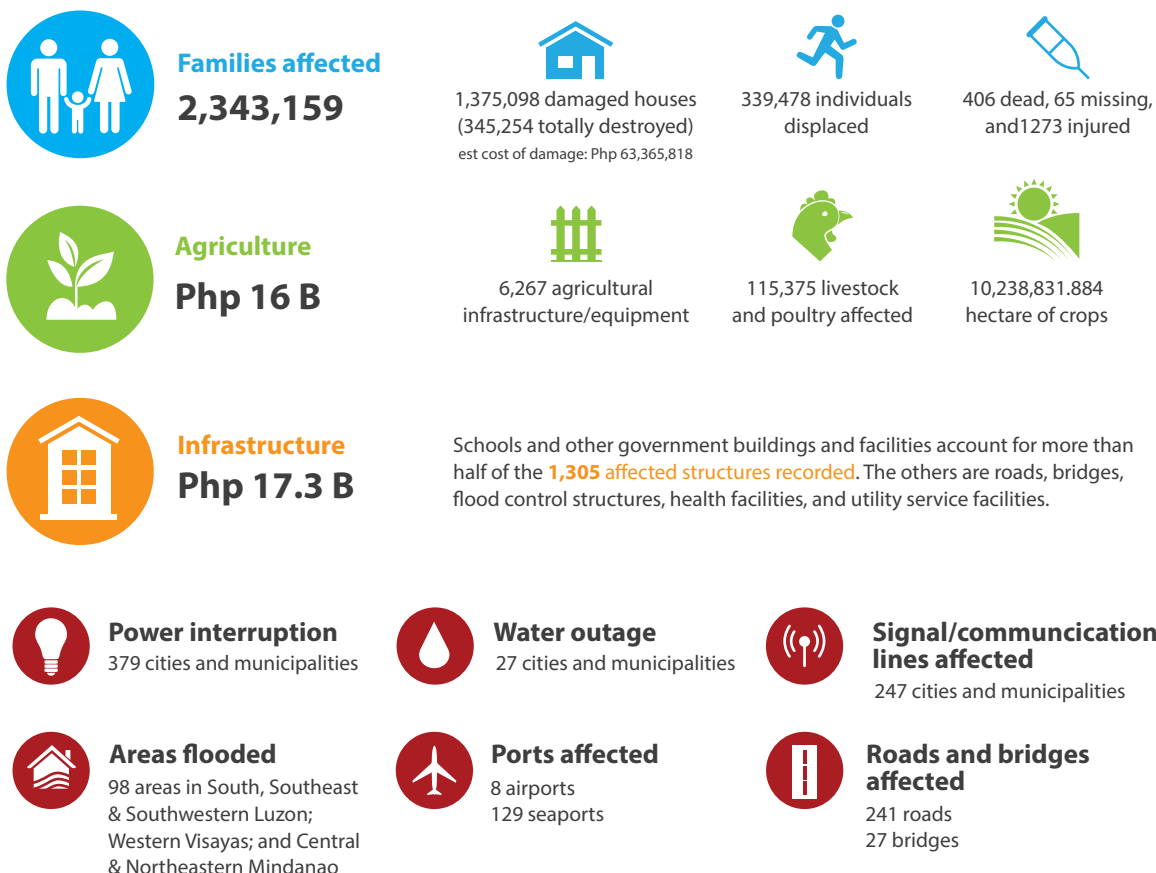





The Joint Typhoon Warning Center (JTWC) and other US meteorological organizations use the Saffir-Simpson Scale to classify tropical storms stronger than the hurricane (or typhoon) intensity based on the maximum sustained wind (1-min mean).

Severity

One-month records. Based on the national disaster management agency's compiled reports as of January 23, 2022.





IN THE FACE OF HUNGER. Our volunteers did their best to maintain COVID-19 health protocols but the dire situation did not help and people desperately flocked to our relief drive operations.

Our work as their Lifeline

On December 18, days through the torrential onslaught of super-typhoon Odette, Döhle Seafront tapped its internal and external partners to assist families affected in the south.

Definitively, our parent company, Peter Döhle

Schiffahrts-KG were among the first to donate financial aid of more than Php 100,000.00 that has been translated into 3,052 kilograms of rice - a staple food in the Philippines. This was on top of the financial aid provided to crewmembers and families

whose homes were rubble by the typhoon.

The donation was included in the first batch of the relief goods sent to Bohol through the kind support of the Philippine Coast Guard on December 26, 2022.

A disaster-prone province

Bohol, an island province in the central Visayas known for coral reefs and unusual geological formations, notably the Chocolate Hills, is a calamity-prone region that has continuously endured not only typhoons but earthquakes and storm surges. In 2013 alone, it suffered a 7.2 magnitude (Richter Scale) Bohol earthquake and super typhoon Haiyan that arrived three weeks after. It also saw devastations from super typhoons Ulysses and Rolly in 2020, among many others. With Odette, access to basic goods; and necessities such as potable water, electricity, and even signal for communication had become scarce in many areas in Bohol.

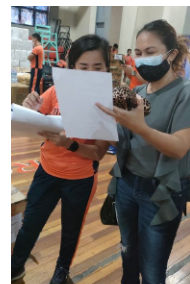
In addition, several industry partners, private entities, and crewmembers sent cash and in-kind donations.

The collected donations made up some 1,500 relief bags distributed from December 28, 2021, to January 1, 2022.

As relief operations poured in Bohol in late December 2021, our team visited isolated communities and evacuation centers in Ubay and Alicia, Bohol.



NO RICH NOR POOR. Both brick and straw houses had been destroyed or turned into rubbles by the gustiness of Odette (Rai). Everyone had been cut off from electricity and other basic needs.



December 21, 2021 - Döhle Seafont President Atty. Iris Bagulat herself ensured coordination and delivery of relief items gathered in Manila to Bohol through ships of the Philippine Coast Guard.

Relief items have arrived in Bohol on December 28. The items were repacked for distribution by volunteers.



NOWHERE SAFE. Even the evacuation areas were heavily damaged by the typhoon.



RAIN OR SHINE. Our ground volunteers in Bohol worked relentlessly to deliver and give out our relief packs despite continuous rain showers after the storm.





Rice (1Kg Pack)
3,052



Canned Meat Loaf
750



Instant Noodles (Pack)
6,192



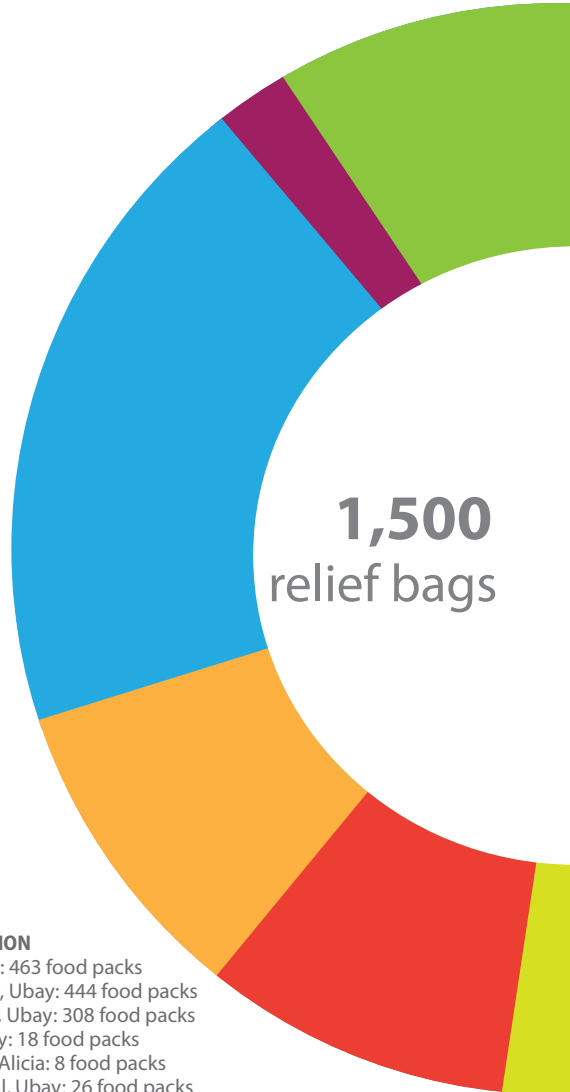
Bottled Water (1L)
2,958



Canned Sardines
3,000



Canned Tuna
750



DISTRIBUTION

Gabi, Ubay: 463 food packs
Lomangog, Ubay: 444 food packs
Bongbong, Ubay: 308 food packs
Ilihan, Ubay: 18 food packs
Cabatang, Alicia: 8 food packs
San Pascual, Ubay: 26 food packs
Remaining food packs: 233

In total, the relief operation has served 1,267 families with 233 food packs left and added to the next relief drive.

Corporate donors

Peter Döhle Schifffahrts-KG
3,052kg of Rice; 665 Cans of Beef Loaf

La Belle Residences
1,569 Bottles of 1L Water

Windsor International Maritime Clinic, Inc.
600 Cans of Sardines

Sapalo Velez Bundang &

Bulilan Law Offices

89 Cans of Sardines

Benedict Safetywear

840 Bottles of 1L Water; 750 Cans of Tuna; 108 Packs of Instant Noodles; 937 Cans of Sardines

Shiphealth Inc.

480 Cans of Sardines; 85 Cans of Beef Loaf

Individual donors

M/V Leto Crew
6,084 Packs of Instant Noodles

Libbie Brawner

392 Bottles of 1L Water

Dr. Cynthia Brawner and family

298 Cans of Sardines

Dr. Josie Brawner and family


298 Cans of Sardines

Maggie Brawner Martin and family

157 Bottles of 1L water

Dr. Jane Brawner and family:

298 Cans of Sardines



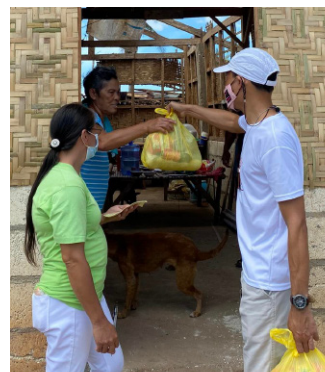
SERVING COMFORT DAY
AND NIGHT. As soon as the
second batch of relief items
had arrived, our volunteers
wasted no time repacking
and sending out the items.

More than a month
after Odette's
rampage, our kababayan in
Bohol were still suffering
from the onslaught of the
super typhoon.

As many Filipinos prepared
for the festivities of Christmas
and New Year's eve, food was
scarce to many Boholanos
and even welcomed 2022 in
rubbled or makeshift homes.
Ground volunteers reported
that, as of writing, re-building
has not yet begun and the
number of relief operations
in the area has already
dwindled as if past a hype.
Typhoon victims were left
making the most out of
what's left of their care
packages - if any have
reached them. To some, there
were none at all.

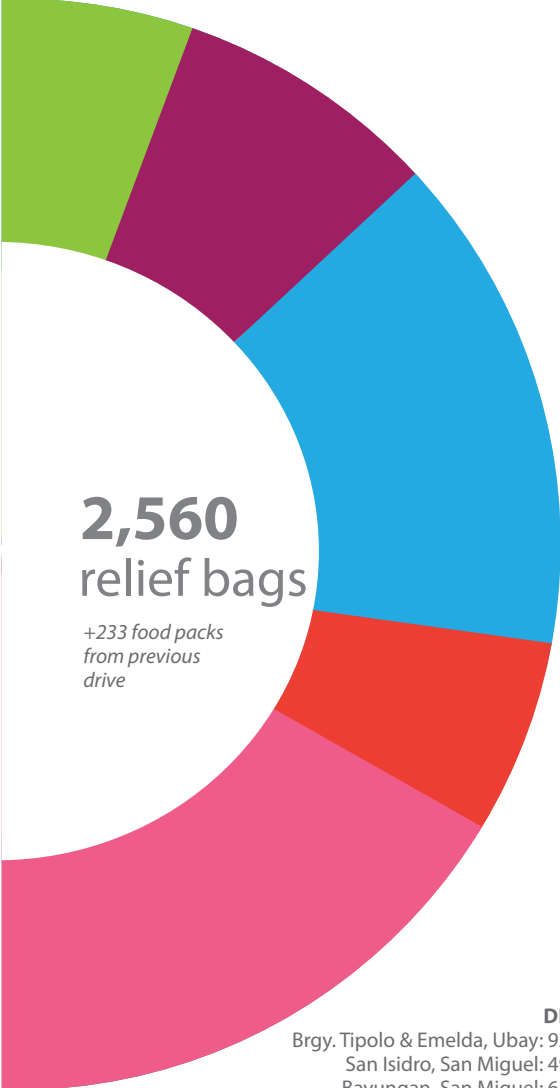
Extending the Lifeline

FROM ONE HOME TO ANOTHER. The second leg of the relief drive saw volunteers reaching out to households in secluded and unreachable areas of Bohol. Many of these areas remain out of electricity and water.



INTO THE RUBBLES. While the world celebrated the coming of 2022 with high esteem, many Boholanos welcomed it in their make-shift homes as the super typhoon leveled their houses to the ground.





DISTRIBUTION
Brgy. Tipolo & Emelda, Ubay: 927 food packs
San Isidro, San Miguel: 498 food packs
Bayungan, San Miguel: 615 food packs
Kauswagan, Trinidad: 708 food packs

second relief drive

from January 21 to 25, 2022



Rice (1Kg Pack)
4,210



Canned Meat Loaf
5,840



Instant Noodles (Pack)
10,240



Canned Sardines
3,000



Instant Coffee (Packets)
12,800

With the continuous generosity of our donors and a replenished stock of goods, our volunteers continued roughing the rubbles towards hard-to-reach communities and barangays of Tipolo and Emelda in Ubay; San Isidro and Bayungan in San Miguel; and Kauswagan, Trinidad.

Peter Döhle Schiffahrts-KG donations were translated into 1,895 cans of sardines;

5,840 cans of meatloaf; 10,240 packs of instant noodles; 12,800 packets of coffee; and 1,720 kilos of rice. The Republic of Liberia Liberian Maritime Authority also donated 2,490 kg of rice and 161 cans of sardines.

Local partners Associated Marine Officers and Seamen's Union of the Philippines (AMOSUP) also sent in 557 cans of sardines to the second batch of relief goods;

and St. Giles Hotel - Makati, 1,114 cans of sardines. In addition, we were delighted with the anonymous donation made through IMEC Training Manager (Manila) Dan Tolentino (1393 cans of sardines) and continued unsolicited support from our seafarers. MV Artemis and MV Dream crewmembers pooled in resources that translated to 467 kg of rice and 443 kg of rice respectively.



Summary:

Total donations & social impact

*Difference in color
opacity identifies
donations
from the first and
second leg of relief
drives.*



7,262
RICE (1KG PACK)



6,590
CANNED MEAT LOAF



16,432 INSTANT NOODLES
(INDIVIDUAL PACK)



6,000
CANNED SARDINES



2,958
BOTTLED WATER (1L)



750
CANNED TUNA



12,800 INSTANT COFFEE
(PACKET)



Communities
reached

11 barangays



Households
reached

4,060

*about 1.4% of the
total number of
households in Bohol*

While many of those affected remain in need, Döhle Seafront and our local volunteers made all efforts to reach as many homes as we can - day or night, rain or shine, with or without road access - extending the generosity and lifeline our donors have given and making the most of our collective resources.

DIRECTORY OF SPONSORS

Peter Döhle Schiffsahrts-KG
Elbchaussee 370
22609 Hamburg, Germany
Phone: +49-40-38108-0
Fax: +49-40-38108-255

The Republic of Liberia
Liberian Maritime Authority

The Associated Marine Officers
and Seamen's Union of the
Philippines (AMOSUP)
Cabildo cor. Sta. Potenciana St.
Seamen's Center Bldg.,
Manila, 1000, PH

St Giles Makati - A St Giles Hotel
Makati Avenue, Corner Kalayaan
Ave, Makati, 1209 Metro Manila
Phone: (02) 8988 9888

Windsor International
Maritime Clinic, Inc.
2nd Floor Palacio Grande Building,
General Luna Street corner Anda
Street, Intramuros, Manila 1012

La Belle Residences
7733 Saint Paul Road
Makati City, Philippines
Phone: (02) 8364 4962

Sapalo Velez Bundang & Bulilan
Law Offices
11th Floor, Security Bank Centre,
6776, Ayala Ave, Makati
1200 Metro Manila
Phone: (02) 8891 1316

Benedict Safetywear
Manufacturing Corporation
1963 A, Linao Street, Malate,
Manila City, Metro Manila

Shiphealth Inc.
1st Floor Patria Building, 573
Maria Orosa, Engracia Reyes St,
Ermita, Manila, 1000
Phone: (02) 5328 3535

NON-CORPORATE/ INDIVIDUALS

Crewmembers of
M/V Leto
M/V Artemis
M/V Dream

Libbie Brawner
Dr. Cynthia Brawner & family
Dr. Josie Brawner & family
Maggie Brawner Martin & family
Dr. Jane Brawner & family

DÖHLE SEAFRONT CREWING (MANILA), INC.

2F/3F Döhle Haus, 30-38 Sen Gil Puyat Ave.,
Barangay San Isidro, Makati City
+632 8 705 8437 / +63 998 5678930

ISO 9001:2015 MLC, 2006 Compliance
2018 Grand Winner, Asia CEO Awards for
Heart for OFWs
2019 Winner, Asia Responsible Enterprise
Award, Investment in People Category
2020 IMEC Recognition for Keeping
Seafarers in Safe Channels
2021 Tinig ng Marino Humanitarian Award

MARAMING SALAMAT PO!

(Thank you very much!)